

# THE GUIDE

---

**LACMA**

EDUCATION AND PUBLIC PROGRAMS  
WINTER 2025

# WELCOME



- 4 ADULT PROGRAMS
- 7 ART + WELLNESS
- 8 MUSIC PROGRAMS
- 9 FILM PROGRAMS
- 10 YOUTH ART ACTIVITY
- 12 FAMILY PROGRAMS
- 14 ART CLASSES
- 16 COMMUNITY PROGRAMS
- 18 SCHOOL AND  
TEACHER PROGRAMS
- 20 EXHIBITIONS ON VIEW

## DAILY ACTIVATIONS

### PUBLIC DOCENT TOURS

Make your visit more meaningful by joining a LACMA docent tour! Daily drop-in tours of our current exhibitions are free with museum admission. Please check the digital screens on campus for the most up-to-date information on tour topics and meeting locations. Visit [lacma.org/event-calendar-weekly](https://lacma.org/event-calendar-weekly) for weekly tour schedule.



Josiah McElheny:  
Island Universe

Island Universe is a large-scale, multi-media sculpture by Josiah McElheny. It consists of numerous thin, radiating metal rods, each ending in a small, glowing spherical light fixture. The sculpture is a complex, star-like structure that changes as the viewer's perspective shifts.

## WEEKLY ACTIVATIONS

### GALLERY INTERPRETERS

On selected days, LACMA docents will be in the Resnick Pavilion and BCAM galleries to answer questions and engage your curiosity about the art on view. No need to register: look for docents wearing “Lets Talk Art” buttons during your next visit!

### FRIDAYS | 12–4 PM

#### DRAWING CART

Pick up a free sketchbook and pencil to write or sketch about your favorite artworks.

### FRIDAYS AND SATURDAYS | 11 AM–5 PM

#### BOONE CHILDREN'S GALLERY: POP UP ART WORKSHOP

Make art with us! The Boone Children's Gallery offers programs for visitors of all ages. These exhibition-based workshops explore various art techniques and encourage creative inspiration for different activities, so make sure to check out the corresponding galleries.

### SUNDAYS | 12:30–3:30 PM

#### ANDELL FAMILY SUNDAYS

Join us in-person on select Sundays or hop on LACMA's YouTube channel and *Unframed* blog for free music, dance, art, and storytelling activities created especially for families to do together!

# CALENDAR

## JANUARY

### **COMMUNITIES CREATE LA! LANDSCAPE LUMINARIES**

Sat, Jan 4 | 1 pm

### **EVADING CAPTURE: BLACK WOMEN IN CINEMA**

Mon, Jan 6 | 6:30 pm

### **IN RESPONSE: IMAGINING BLACK DIASPORAS**

Thu, Jan 9 | 7 pm

### **IN CONVERSATION: RICHARD TUTTLE, STEPHANIE BARRON, AND FRANCES LAZARE**

Mon, Jan 13 | 7 pm

### **PIGMENT AND PERSPECTIVE: A DEEP DIVE INTO MESOAMERICAN COLOR**

Tue, Jan 14 | 4:30 pm

### **COMMUNITIES CREATE LA! LANDSCAPE LUMINARIES**

Wed, Jan 15 | 3:30 pm

### **GALLERY TOUR—MAPPING THE INFINITE WITH E.C. KRUPP**

Thu, Jan 16 | 7 pm

### **KIDS ART CLASS: REIMAGINING SCULPTURES (AGES 9-12)**

Sun, Jan 19 | 10 am

### **TOGETHER WE CREATE: AN ARTFUL GATHERING OF COMMUNITY**

Sun, Jan 19 | 10 am

### **EVENINGS FOR EDUCATORS: DIGITAL WITNESS**

Wed, Jan 22 | 4:30 pm

### **OPENING RECEPTION—NATURE ON NOTICE: CONTEMPORARY ART AND ECOLOGY**

Fri, Jan 24 | 2:30 pm

### **ECO-EXPRESSIONS: DROP-IN WORKSHOPS WITH MICHELE LORUSSO**

Sat, Jan 25 | 1:30 pm

### **MINDFUL MONDAY: CULTIVATING EMPATHY AND CONNECTEDNESS @ HOME**

Mon, Jan 27 | 4 pm

### **DEMO 2025: CITIES EDITION**

Thu, Jan 30 | 24 hours

### **IN CONVERSATION: HUNTREZZ JANOS AND DR. SAFIYA NOBLE**

Fri, Jan 31 | 7 pm

## FEBRUARY

### **COMMUNITIES CREATE LA! GALACTIC WIND CHIMES**

Sat, Feb 1 | 10:30 am

### **COMMUNITIES CREATE LA! SCRAP PAPER STORIES**

Sat, Feb 1 | 1 pm

### **ADULT ART CLASS: POETRY IN THE GALLERIES— THE UNIVERSE'S PLAYTHING**

Sun, Feb 2 | 2 pm

### **DENTAXUVIA: A PERFORMANCE BY HUNTREZZ JANOS AND ANTIGONI TSAGKAROPOULOU**

Sun, Feb 2 | 3 pm

### **COMMUNITIES CREATE LA! SCRAP PAPER STORIES**

Wed, Feb 5 | 3:30 pm

### **GALLERY TOUR—MAPPING THE INFINITE WITH JOHN MULCHAEY AND JUNA KOLLMEIER**

Thu, Feb 6 | 7 pm

### **CELESTIAL PIONEERS: WOMEN IN THE HISTORY OF ASTRONOMY**

Mon, Feb 10 | 7 pm

### **EDUCATOR SPEAKER SERIES: LAND-CENTERED PRAXIS IN THE ARTS CLASSROOM**

Thu, Feb 13 | 5 pm

**LOVE AT LACMA**

Fri, Feb 14 | 3 pm

**ECO-EXPRESSIONS: DROP-IN WORKSHOPS  
WITH MICHELE LORUSSO**

Sat, Feb 15 | 1:30 pm

**COMMUNITIES CREATE LA! MAGICAL HABITATS**

Wed, Feb 19 | 3:30 pm

**ECO-EXPRESSIONS: DROP-IN WORKSHOPS  
WITH MICHELE LORUSSO**

Thu, Feb 20 | 2:30 pm

**ADULT ART CLASS: NAVIGATE NATURE  
AND ART THROUGH DRAWING**

Sat, Feb 22 | 1 pm

**ART & MEDITATION**

Sat, Feb 22 | 1:30 pm

**ART & MUSIC: COSMOLOGIES ACROSS CULTURES  
WITH GUILLERMO GALINDO**

Sun, Feb 23 | 7:30 pm

**MINDFUL MONDAY: CULTIVATING EMPATHY  
AND CONNECTEDNESS @ HOME**

Mon, Feb 24 | 4 pm

**CONCEPTUALIZING THE MULTIVERSE:  
JOSIAH MCELHENY, DAVID WEINBERG,  
AND MICHAEL GOVAN**

Tue, Feb 25 | 7 pm

**MARCH**

**COMMUNITIES CREATE LA! ANIMAL WORLDS**

Sat, Mar 1 | 10:30 am

**COMMUNITIES CREATE LA! ANIMAL WORLDS**

Sat, Mar 1 | 1 pm

**COMMUNITIES CREATE LA! ICONIC MEDALLIONS**

Wed, Mar 5 | 3:30 pm

**SOUND BATH: NATURE ON NOTICE AT  
CHARLES WHITE GALLERY**

Sat, Mar 8 | 2 pm

**DIGITAL INFINITIES: SPIRITED PIXELS**

Sat, Mar 8 | 6 pm

**KIDS ART CLASS: SPACE ALL AROUND US  
(AGES 6-8)**

Sun, Mar 9 | 10 am

**ADULT ART CLASS: WEAVING**

Sun, Mar 9 | 2 pm

**COMMUNITIES CREATE LA! SEALIFE ADVENTURES**

Wed, Mar 19 | 3:30 pm

**EVENINGS FOR EDUCATORS: THE NATURE OF  
COLOR IN MESOAMERICAN ART**

Wed, Mar 19 | 4:30 pm

**WE LIVE IN PAINTING: THE NATURE OF COLOR  
IN MESOAMERICAN ART—A VIRTUAL SYMPOSIUM**

Thu, Mar 20–Fri, Mar 21 | 10 am

**ALGORITHM AND RHYME: ALLISON PARRISH  
AND ZACH LIEBERMAN**

Sat, Mar 22 | 1 pm

**MINDFUL MONDAY: CULTIVATING EMPATHY  
AND CONNECTEDNESS @ HOME**

Mon, Mar 24 | 4 pm

**ECO-EXPRESSIONS: DROP-IN WORKSHOPS  
WITH MICHELE LORUSSO**

Thu, Mar 27 | 2:30 pm

**ECO-EXPRESSIONS: DROP-IN WORKSHOP  
WITH MICHELE LORUSSO**

Sat, Mar 29 | 1:30 pm

Image Credit: *Mural Fragment of Scalloped Shell with Hands and Animal Head* (detail), 350–450 CE, Teotihuacan, Lime plaster with pigment, Museo de Murales Teotihuacanos, Beatriz de la Fuente, photo © Museum Associates/LACMA, by Javier Hinojosa

# ADULT PROGRAMS

Join us for an exciting range of programs and events that stimulate curiosity, spark creativity, and offer fresh insights into our permanent collection and special exhibitions all year long. Enhance your museum experience with talks, mindful meditation, gallery tours, performances, and so much more! For more information and to RSVP, visit [lacma.org](https://lacma.org).

**THURSDAY, JANUARY 9 | 7-8:30 PM | LACMA**

**IN RESPONSE: IMAGINING BLACK DIASPORAS**

Explore the concept of diaspora in *Imagining Black Diasporas: 21st-Century Art and Poetics* with artists and LACMA curator Dhyandra Lawson as they discuss how contemporary artists and poets reimagine their cultural heritage, transforming it into vibrant sources of creativity and aesthetic connections.

**MONDAY, JANUARY 13 | 7-8 PM | LACMA**

**IN CONVERSATION: RICHARD TUTTLE, STEPHANIE BARRON, AND FRANCES LAZARE**

Join curators Stephanie Barron and Frances Lazare for a special conversation with artist Richard Tuttle. Coinciding with the installation of LACMA's recent acquisition *Wire Piece #23* (1972), Tuttle will discuss the ephemerality and longevity of his 1970s wire pieces, which sit at the intersection of sculpture and line drawing.

**TUESDAY, JANUARY 14 | 4:30-5:30 PM | LACMA**

**PIGMENT AND PERSPECTIVE: A DEEP DIVE INTO MESOAMERICAN COLOR**

At these quarterly gallery tours of *We Live in Painting: The Nature of Color in Mesoamerican Art* led by curators, educators, artists, and conservators, we'll dive into the invention and use of pigments, offering insights into the Mesoamerican worldview and the deep significance of color.

**THURSDAY, JANUARY 16 | 7-8:30 PM | LACMA**

**GALLERY TOUR—MAPPING THE INFINITE WITH E.C. KRUPP**

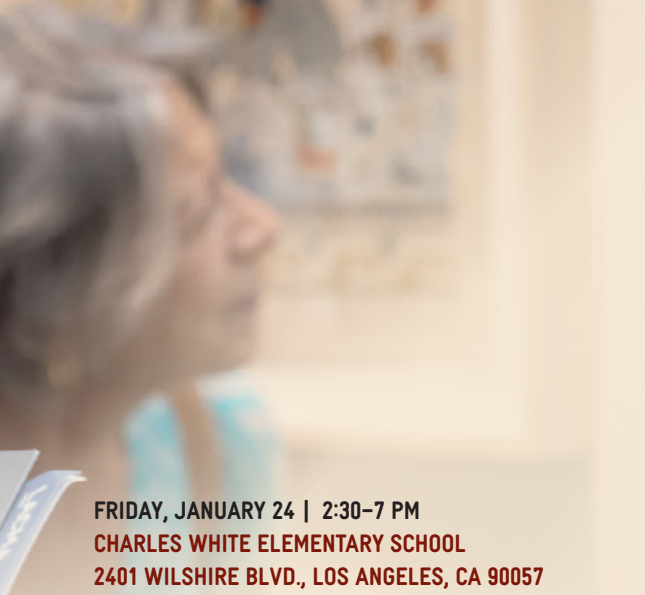
How did ancient cultures understand the sky? Join Griffith Observatory director E.C. Krupp and LACMA curator Stephen Little for a tour of *Mapping the Infinite: Cosmologies Across Cultures* and a discussion of the ways that ancient cultures viewed the sky and how it affected their societies.

**SUNDAY, JANUARY 19 | 10 AM-4 PM | LACMA**

**TOGETHER WE CREATE: AN ARTFUL GATHERING OF COMMUNITY**

Start the year with hope, creativity, and connection. On the eve of the presidential inauguration, join us at LACMA for a day of art and community, and engage in inspiring workshops and activities designed to help you set intentions, spark creativity, and foster deeper listening. Let's create a space where hope and connection thrive!

**Co-presented by For Freedoms.**



**FRIDAY, JANUARY 24 | 2:30–7 PM**

**CHARLES WHITE ELEMENTARY SCHOOL  
2401 WILSHIRE BLVD., LOS ANGELES, CA 90057**

**OPENING RECEPTION—NATURE ON NOTICE:  
CONTEMPORARY ART AND ECOLOGY**

Celebrate the exhibition *Nature on Notice: Contemporary Art and Ecology* and explore how art and science can address ecological challenges with art-making workshops for all ages, music, and refreshments.

**SATURDAY, JANUARY 25 | 1:30–4 PM**

**SATURDAY, FEBRUARY 15 | 1:30–4 PM**

**THURSDAY, FEBRUARY 20 | 2:30–6 PM**

**SATURDAY, MARCH 22 | 1:30–4 PM**

**THURSDAY, MARCH 27 | 2:30–6 PM**

**CHARLES WHITE ELEMENTARY SCHOOL  
2401 WILSHIRE BLVD., LOS ANGELES, CA 90057**

**ECO-EXPRESSIONS: DROP-IN LETTERS AND  
ART-MAKING WORKSHOPS WITH MICHELE LORUSSO**

Join artist-in-residence Michele Lorusso for drop-in activities including letters to the world in the future, environmental chats, and hands-on art-making workshops inspired by the exhibition *Nature on Notice: Contemporary Art and Ecology*. All ages are welcome. All programs provided with bilingual translation in Spanish.

**FRIDAY, JANUARY 31 | 7–8:30 PM | LACMA**

**IN CONVERSATION: HUNTREZZ JANOS AND  
DR. SAFIYA NOBLE**

At the first in this two-part series, Huntrezz Janos and Dr. Safiya Noble delve into how AI and the internet impact creative practice. Presented in partnership with *Digital Capture: Southern California and the Pixel-Based Image World* at UCR ARTS at UC Riverside and *Digital Witness: Revolutions in Design, Photography, and Film* at LACMA.

**FRIDAY, FEBRUARY 14 | 3–8 PM | LACMA**

**LOVE AT LACMA**

Whether you're with friends, spending time with a special someone, or embracing solo adventures, you'll find activities at the museum that honor love in all its forms, from speed dating and love-song karaoke to romantic photo opportunities and unique keepsake crafting. Let art and romance inspire your Valentine's Day at LACMA!

**SUNDAY, FEBRUARY 2 | 3–4:30 PM**

**UC ARTS, 3824 MAIN ST., RIVERSIDE, CA 92501**

**DENTAXUVIA: A PERFORMANCE BY HUNTREZZ JANOS  
AND ANTIGONI TSAGKAROPOULOU**

Huntrezz Janos presents *Dentaxuvia*, an extended reality performance with fellow artist Antigoni Tsagkaropoulou exploring concepts of queer time and space, transcorporeality, and quantum entanglements, in the second of a two-part series presented in partnership with *Digital Capture: Southern California and the Pixel-Based Image World* at UCR ARTS at UC Riverside and *Digital Witness: Revolutions in Design, Photography, and Film* at LACMA.

**THURSDAY, FEBRUARY 6 | 7–8:30 PM | LACMA**

**GALLERY TOUR—MAPPING THE INFINITE WITH  
JOHN MULCHAEY AND JUNA KOLLMEIER**

Learn about 20th- and 21st-century astronomical discoveries at a walkthrough of the exhibition *Mapping the Infinite: Cosmologies Across Cultures* with astrophysicists Dr. John Mulchaey and Dr. Juna Kollmeier.

**MONDAY, FEBRUARY 10 | 7–8:30 PM | LACMA**

**CELESTIAL PIONEERS: WOMEN IN THE HISTORY  
OF ASTRONOMY**

In conjunction with *Mapping the Infinite: Cosmologies Across Cultures*, join Erica Clark and other experts of the Carnegie Science Observatories for an enlightening discussion on the often-overlooked contributions of women in the history of astronomy. After the discussion, guests are invited to tour the exhibition and explore the fascinating ways that cultures have envisioned the cosmos across time.



# ADULT PROGRAMS

---

## CONTINUED

**TUESDAY, FEBRUARY 25 | 7–8:30 PM | LACMA**

**CONCEPTUALIZING THE MULTIVERSE: JOSIAH MCELHENY, DAVID WEINBERG, AND MICHAEL GOVAN**

Join artist Josiah McElheny, astrophysicist David Weinberg, and LACMA director Michael Govan as they explore the multiverse—the idea that countless universes exist alongside our own. They will discuss our evolving understanding of this fascinating concept and representations of coexisting universes in a conversation presented alongside *Mapping the Infinite: Cosmologies Across Cultures* and *Josiah McElheny: Island Universe*.

**THURSDAY, MARCH 20 | 10–11:30 AM | ONLINE**

**FRIDAY, MARCH 21 | 10–11:30 AM | ONLINE**

**WE LIVE IN PAINTING: THE NATURE OF COLOR IN MESOAMERICAN ART—A VIRTUAL SYMPOSIUM**

At this two-day virtual symposium in conjunction with *We Live in Painting: The Nature of Color in Mesoamerican Art*, learn from scholars and contemporary artists about color in Mesoamerica and its deep-seated significance. Speakers will address materiality, technique, and worldview to convey the richness of color.

**SATURDAY, MARCH 22 | 1–2:30 PM | LACMA**

**ALGORITHM AND RHYME: ALLISON PARRISH AND ZACH LIEBERMAN**

New media artists Allison Parrish and Zach Lieberman explore the intersections of generative design, poetry, and education in their work in a conversation moderated by Ivan Cruz, presented alongside *Digital Witness: Algorithmic Spaces for Typography and Language* at HMCT Gallery and *Digital Witness: Revolutions in Design, Photography, and Film* at LACMA.



# ART + WELLNESS

---

Art + Wellness programming at LACMA encompasses a wide range of opportunities for participants to make meaningful connections with art as they support their physical, mental, and social health.

MONDAY, JANUARY 27 | 4-5 PM | ONLINE

MONDAY, FEBRUARY 24 | 4-5 PM | ONLINE

MONDAY, MARCH 24 | 4-5 PM | ONLINE

MINDFUL MONDAY: CULTIVATING EMPATHY AND CONNECTEDNESS @ HOME

Join LACMA educators for live, virtual gatherings that encourage careful looking, creative responses, the sharing of multiple perspectives, and mindful reflection.

SATURDAY, FEBRUARY 22 | 1:30-2:30 PM

CHARLES WHITE ELEMENTARY SCHOOL

2401 WILSHIRE BLVD., LOS ANGELES, CA 90057

ART & MEDITATION

Art and meditation offer powerful pathways to understanding our relationship with nature. Join educator Alicia Vogl Sáenz in a slow-looking exercise in conjunction with the exhibition *Nature on Notice: Contemporary Art and Ecology* followed by meditation. No meditation experience necessary; instruction will be given.

SATURDAY, MARCH 8 | 2-3 PM | \$15, MEMBERS: \$10

CHARLES WHITE ELEMENTARY SCHOOL

2401 WILSHIRE BLVD., LOS ANGELES, CA 90057

SOUND BATH: NATURE ON NOTICE AT CHARLES WHITE ELEMENTARY SCHOOL

Enjoy a special sound bath provided with Devon Cunningham in the exhibition *Nature on Notice: Contemporary Art and Ecology*. This unique sonic experience is intended to offer a meditative moment to connect with the works on view and each other.



# MUSIC

---

# PROGRAMS

---

Join us for live concerts featuring leading international and local ensembles performing classical, jazz, Latin, and new music. Please visit [lacma.org/music](https://lacma.org/music) for the most up-to-date details and much more.

**SUNDAY, FEBRUARY 23 | 7:30–9:30 PM | LACMA**  
**ART & MUSIC: COSMOLOGIES ACROSS CULTURES WITH**  
**GUILLERMO GALINDO**

To celebrate the exhibition *Mapping the Infinite: Cosmologies Across Cultures*, which explores the theme of art and science as part of PST ART, this event presents a special soundscape experience by Mexican composer, performer, and artist Guillermo Galindo.

Image Credit: Willem Janszoon Blaeu, *Celestial Globe*, circa 1630, Adler Planetarium



# FILM PROGRAMS

FILM at LACMA presents virtual and special in-person presentations of classic and contemporary narrative and documentary films, artists and their influences, emerging auteurs, international showcases, special guest-curated programs, and conversations with artists and special guests. Details at [lacma.org](https://lacma.org).

**MONDAY, JANUARY 6 | 6:30–10 PM | DIVA**

**MONDAY, JANUARY 6–20 | SHORTS PROGRAM | ONLINE**

ACADEMY MUSEUM TED MANN THEATER

6067 WILSHIRE BLVD., LOS ANGELES, CA, 90036

**EVADING CAPTURE: BLACK WOMEN IN CINEMA**

To celebrate the exhibition *Simone Leigh*, filmmaker Madeleine Hunt-Ehrlich, a collaborator of Leigh's, presents a guest-curated film series exploring how Black women have created ways to express themselves when desire is too bold or too risky to reveal.

A presentation of short films available on [lacma.org](https://lacma.org) will be followed by an in-person screening of *Diva*, the story of a singer who chooses to keep her art on her own terms, with a performance by classical singer Abiodun Koya and conversation between Hunt-Ehrlich and scholar, curator, and critic Tiffany Barber.

**THURSDAY, JANUARY 30–FRIDAY, FEBRUARY 14 | 24 HOURS A DAY**

MARRIOTT LA LIVE, 901 W. OLYMPIC BLVD., LOS ANGELES, CA 90015

**DEMO 2025: CITIES EDITION**

The largest motion design festival in the world comes to Downtown Los Angeles for two weeks, presented alongside *Digital Witness: Revolutions in Design, Photography, and Film*.

DEMO festival, initiated by Studio Dumbar/DEPT® and co-presented by LACMA and StandardVision, shows the world's best motion design on outdoor screens in the public space. For 24 hours, outdoor screens in 15 cities across Europe and North America—including one at the intersection of Olympic Blvd. and Francisco St.—showcase a selection of the best motion works from around the globe.

**SATURDAY, MARCH 8 | 6–9 PM**

REDCAT, 631 W. 2ND ST., LOS ANGELES, CA 90012

**DIGITAL INFINITIES: SPIRITED PIXELS**

Discover the work of artists using film and media to expand the possibilities of digital aesthetic strategies at this film screening presented alongside *Digital Witness: Revolutions in Design, Photography, and Film*.

**Co-presented by REDCAT**



## YOUTH ART ACTIVITY

# WHAT'S IN THE SKY?

Have you ever gazed into the sky and wondered what's up there? Lots of artists, scientists, and artist-scientists have too!

*Mapping the Infinite: Cosmologies Across Cultures* is an exhibition that explores how people throughout history and from all parts of the world have used art to show and explain the universe, how it works, and what it means. In it, you will see paintings, sculptures, books, and more, from ancient times to this year, that are about the world above and beyond earth.

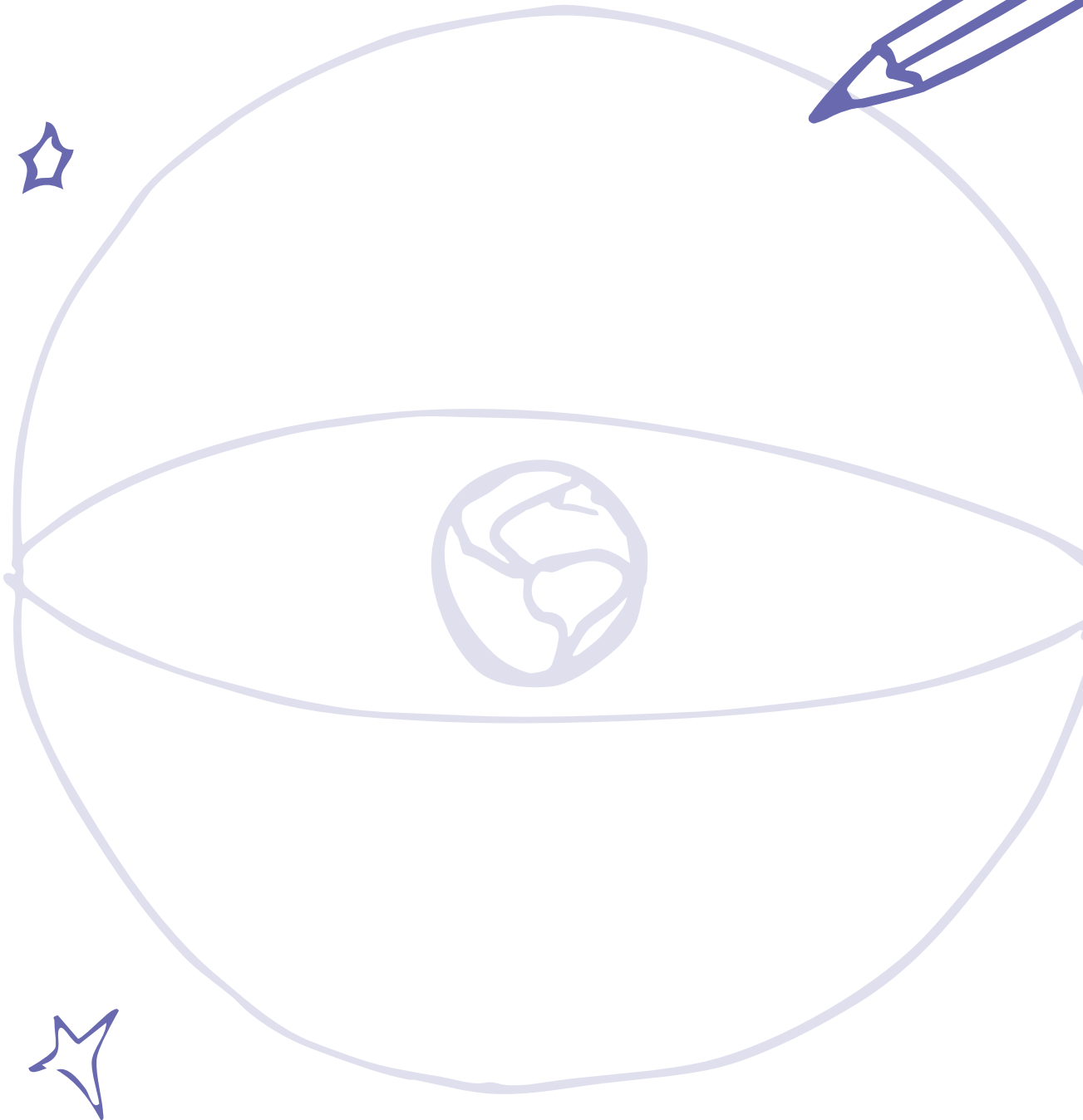
Pictured above is an astrolabe from 13th-century Spain (about 800 years old), which was used to identify stars and planets and to measure how far they were from earth.


**DO YOU THINK WE LIVE IN THE ONLY UNIVERSE?  
DOES THE UNIVERSE CHANGE THROUGH TIME?  
WHAT DO YOU THINK IS UP IN THE NIGHT SKY?**

Image Credit: Muhammad ibn 'Abd al-'Aziz al Khama'iri, *Astrolabe*, 1226–1227/624 A.H., Los Angeles County Museum of Art, gift of Carolyn Merchant, photo © Museum Associates/LACMA

## GUIDE US TO YOUR GALAXY!

A celestial sphere is a type of circular map that shows objects in outer space that are around the earth. Use colored pencils or markers to create a map of the stars, planets, and everything else that you can see when you gaze into the sky. Have fun and add anything that you imagine is also living up there. If you want, you can label all the heavenly bodies in your map or write a few sentences explaining your guide to the galaxy.





# FAMILY PROGRAMS

Join us for in-person art programs for all ages taught by teaching artists! Check out our treasure trove of free on-demand art activities and performances. For more information and to learn more about programs, visit [lacma.org](https://lacma.org) or email [educate@lacma.org](mailto:educate@lacma.org).



### PARDON OUR DUST

As we prepare for the new David Geffen Galleries, we will continue to offer high-quality programming for visitors of all ages outdoors and in the galleries.

### NEXGENLA—FREE YOUTH MEMBERSHIP

Kids and teens, do you live in L.A. County? Join NexGenLA—the museum’s free and award winning youth membership! NexGenLA members visit the museum for free anytime, bring one guest for free, and get member pricing on classes and camps. Visit [lacma.org](https://www.lacma.org) for more info. Sign up in person at the NexGenLA table at LACMA.

**SATURDAY, JANUARY 4, 11, 18, 25 | 11 AM–5 PM**

**FRIDAY AND SATURDAY, FEBRUARY 1, 7, 8, 14, 15, 21, 22, 28 | 11 AM–5 PM**

**SATURDAY, MARCH 8, 15, 22, 29 | 11 AM–5 PM**

### BOONE CHILDREN’S GALLERY: POP UP ART WORKSHOP

Make art with us! The Boone Children’s Gallery offers programs for visitors of all ages. These exhibition-based workshops explore various art techniques and encourage creative inspiration for different activities, so make sure to check out the corresponding galleries.

**SUNDAYS, JANUARY 5, 12, 19, 26 | 12:30–3:30 PM**

**SUNDAYS, FEBRUARY 2, 9, 16, 23 | 12:30–3:30 PM**

**SUNDAYS, MARCH 2, 9, 16, 23, 30 | 12:30–3:30 PM**

### FIBER MAKER’S CIRCLE

Bring your knit, crochet, embroidery, or hand-sewing project and join a drop-in intergenerational fiber maker’s circle.

### ANDELL FAMILY SUNDAYS

Join us on select Sundays for art workshops created especially for an intergenerational experience!

**JANUARY 5, 12, 19, 26 | 12:30–3:30 PM**

#### **ART THAT MOVES**

**FEBRUARY 2, 9, 16, 23 | 12:30–3:30 PM**

#### **IMAGINING BLACK DIASPORAS**

**MARCH 2, 9, 16, 23, 30 | 12:30–3:30 PM**

#### **MAKE A SCENE**

# ART CLASSES

Explore art techniques from basic to advanced with our experienced teaching artists who will guide you through a variety of enriching classes. Classes include art materials and parking validation. Due to construction, classes will take place in gallery spaces and outdoors on LACMA's campus, rather than in a studio. With that in mind, acrylic painting and printmaking classes are on hiatus. To learn about scholarships for classes (ages six and up), visit [lacma.org](http://lacma.org) or email [artclasses@lacma.org](mailto:artclasses@lacma.org).

**SUNDAY, JANUARY 12, 19, AND 26**

**3 SESSIONS | 10 AM-12 PM | LACMA GALLERIES  
\$155, NEXGENLA/LACMA MEMBERS: \$135**

**KIDS ART CLASS: REIMAGINING SCULPTURE (AGES 9-12)**

What makes a sculpture? Explore different materials that you'll bend, tie, and twist to create mixed media works of art. Taught by Bianca Argueta.

**SUNDAY, FEBRUARY 9, 16, 23, MARCH 2, AND 9**

**5 SESSIONS | 2-5 PM | LACMA GALLERIES**

**\$345, NEXGENLA (AGES 16-17)/LACMA MEMBERS: \$300**

**ADULT ART CLASS: POETRY IN THE GALLERIES—  
THE UNIVERSE'S PLAYTHING**

Join an immersive writing experience inspired by *Mapping the Infinite: Cosmologies Across Cultures* and LACMA's permanent collection. Each session will feature writing, discussions of poetry and ekphrasis, and daily practices to keep you writing at home. No experience necessary. Taught by Brendan Constantine.

**SATURDAY, FEBRUARY 22 | 1-4 PM | RESNICK TERRACE**

**\$80, NEXGENLA (AGES 16-17)/LACMA MEMBERS: \$70**

**ADULT ART CLASS: NAVIGATE NATURE  
AND ART THROUGH DRAWING**

Explore the concepts of mapping and navigation as metaphors through close observation in *Mapping the Infinite: Cosmologies Across Cultures*. We'll draw from nature outdoors and inside the galleries and learn to use a map and compass to navigate guided sketching activities. Taught by Stacey Vigallon.





## **SPRING ART CAMP**

Spring Art Camp will take place on April 14–18, 2025. Stay tuned for more information.

## **FREE FOR OLDER ADULTS**

With specialized programming designed specifically for older adults, LACMA is an accessible resource for inspiration, intellectual stimulation, personal reflection, and social engagement.

**SUNDAY, MARCH 9, 16, AND 23 | 3 SESSIONS**

**10 AM–12 PM | LACMA GALLERIES**

**\$155, NEXGENLA/LACMA MEMBERS: \$135**

### **KIDS ART CLASS: SPACE ALL AROUND US (AGES 6–8)**

Be inspired by *Josiah McElheny: Island Universe* and more artworks on view at the museum, explore space and shape, and construct your own sculptures. Taught by Beatriz Jaramillo.

**SUNDAY, MARCH 16, 23, 30, APRIL 6, AND 13**

**5 SESSIONS | 2–5 PM | LACMA GALLERIES**

**\$345, NEXGENLA (AGES 16–17)/LACMA MEMBERS: \$300**

### **ADULT ART CLASS: WEAVING**

Observe textiles on view in the exhibition *We Live in Painting: The Nature of Color in Mesoamerican Art* and learn to weave using a small loom. Taught by Connie Rohman.

**TUESDAY AND FRIDAY, APRIL 29, MAY 2, 6, 9, 13, 16, 20, AND 23 | 10 AM–1 PM**

### **CREATE + COLLABORATE: ART OF WEAVING**

Create + Collaborate is a FREE 8-session art program for participants ages 55+. Explore media techniques such as drawing, sculpture, and mixed media. Seats are limited. Preference will be given to new students. To express interest, contact **CreateCollaborate@lacma.org**.

**TUESDAY, JANUARY 21 | 11 AM | ONLINE**

**TUESDAY, FEBRUARY 18 | 11 AM | ONLINE**

**TUESDAY, MARCH 18 | 11 AM | ONLINE**

### **PERSONAL CONNECTIONS**

Join teaching artist Elonda Norris in an engaging, fun, and free virtual art discussion on Zoom! She will guide the care partner and person living with early stage dementia or Alzheimer's to look at and discuss works of art from the museum's collection. Please contact **aoh@alzla.org** to RSVP.

# COMMUNITY PROGRAMS

Discover a whole new world of artistic possibility as you create and learn about the broad range of artists in LACMA's permanent collection. Communities Create LA! provides families and groups with opportunities to experiment together through drawing, mixed media, and non-traditional materials. Workshops are offered in English and Spanish.

## ON-DEMAND PLAYLIST

Unleash your inner artist with this creative, fun online workshop series. Check out the Communities Create LA! playlist on LACMA's YouTube channel to learn, create, and innovate while experimenting with different art techniques and approaches. Available in English and Spanish.

## COMMUNITIES CREATE LA! STORIES COME TO LIFE

Innovate, create, and travel to the enchanted world of books and art! Transform your personal stories into dazzling works of art through sculpture, masks, collage, and

more. Presented in person. For more information, email [mramos@lacma.org](mailto:mramos@lacma.org).

**SATURDAY, JANUARY 4 | 1-2 PM | A C BILBREW LIBRARY**

### COMMUNITIES CREATE LA! LANDSCAPE LUMINARIES

Capture the beauty of winter in this hands-on workshop where you'll design a personalized landscape and transform it into a glowing lantern! We will explore color and light to transform simple materials into beautiful luminaries that shine from within.

**WEDNESDAY, JANUARY 15 | 3:30-5 PM | LENNOX LIBRARY**

### COMMUNITIES CREATE LA! LANDSCAPE LUMINARIES

Capture the beauty of winter in this hands-on workshop where participants will design a personalized landscape and transform it into a glowing lantern! We will explore color and light to transform simple materials into beautiful luminaries that shine from within.

**SATURDAY, FEBRUARY 1 | 1-2 PM | A C BILBREW LIBRARY**

### COMMUNITIES CREATE LA! SCRAP PAPER STORIES

In this imaginative workshop, participants will explore the art of portraiture through mixed-media collage as we craft unique, expressive portraits that tell a story using scraps of paper and found materials. Bring your portrait to life while exploring themes of identity, memory, and self-expression!

**WEDNESDAY, FEBRUARY 5 | 3:30-5 PM | LENNOX LIBRARY**

### COMMUNITIES CREATE LA! SCRAP PAPER STORIES

In this imaginative workshop, participants will explore the art of portraiture through mixed-media collage as we craft unique, expressive portraits that tell a story using scraps of paper and found materials. Bring your portrait to life while exploring themes of identity, memory, and self-expression!

Image Credit: Photo © Museum Associates/LACMA, by Nini Sanchez

**WEDNESDAY, FEBRUARY 19 | 3:30-5 PM | LENNOX LIBRARY**  
**COMMUNITIES CREATE LA! MAGICAL HABITATS**

Step into a world of imagination as we explore the concept of habitat through art! Designing miniature 3D scenes that tell a story, this workshop delves into animal shapes and storytelling in a unique and fun way.

**SATURDAY, MARCH 1 | 1-2 PM | A C BILBREW LIBRARY**  
**COMMUNITIES CREATE LA! ANIMAL WORLDS**

In this workshop, participants will use colorful yarn and traditional techniques to design animal-themed artworks, exploring the Huichol people's rich connection to nature and symbolism. Blending cultural insight with personal expression, we'll create vibrant tapestries full of color and creativity!

**WEDNESDAY, MARCH 5 | 3:30-5 PM | LENNOX LIBRARY**  
**COMMUNITIES CREATE LA! ICONIC MEDALLIONS**

In this workshop, we will craft unique medallions inspired by nature to express personal identity and connection to the environment. Using natural motifs, colors, and textures, participants will design wearable art that embodies their unique style and relationship with the natural world.

**WEDNESDAY, MARCH 19 | 3:30-5 PM | LENNOX LIBRARY**  
**COMMUNITIES CREATE LA! SEALIFE ADVENTURES**

Dive into the vibrant world of marine life through this innovative watercolor workshop! We'll use drawing, painting, and a variety of other techniques to capture colorful waterscapes inspired by the museum's collection.

**COMMUNITIES CREATE LA!**  
**ARTVENTURES IN THE PARK**

Unleash your imagination and have a blast creating dynamic artwork inspired by nature's colors, patterns, forms, and textures. Creativity begins here! Presented in person. For more information, email [nsanchez1@lacma.org](mailto:nsanchez1@lacma.org).

**SATURDAY, FEBRUARY 1 | 10:30 AM-12 PM**  
**EARVIN "MAGIC" JOHNSON PARK**

**COMMUNITIES CREATE LA! GALACTIC WIND CHIMES**

Let your art dance in the breeze with this imaginative workshop where participants create stunning galaxy-inspired wind chimes using beads and recycled materials. Transform everyday items into celestial treasures that add a touch of the cosmos to your space.

**SATURDAY, MARCH 1 | 10:30 AM-12 PM**  
**EARVIN "MAGIC" JOHNSON PARK**

**COMMUNITIES CREATE LA! ANIMAL WORLDS**

In this workshop, participants will use colorful yarn and traditional techniques to design animal-themed artworks, exploring the Huichol people's rich connection to nature and symbolism. Blending cultural insight with personal expression, we'll create vibrant tapestries full of color and creativity!



# SCHOOL AND TEACHER PROGRAMS

## SCHOOL PROGRAMS

Kick off the new year with LACMA! Whether you want to bring your students to the museum, have LACMA come to your school, or take a dive into our grade-specific online courses—LACMA has something for you! Visit [lacma.org](https://lacma.org) to learn more.

**THROUGH MAY 2025**

### ANCIENT WORLD MOBILE (GRADE 6)

Apply to have the Ancient World Mobile (a 48-foot mobile classroom) visit your campus! In this in-person program, students will be able to handle objects from LACMA's Egyptian, Greek, Roman, and Middle East collections and learn more about Early World Cultures. Visit [lacma.org/education/school-partnership-programs](https://lacma.org/education/school-partnership-programs) to apply.

**THROUGH MAY 2025**

### MAYA MOBILE (GRADE 7)

Apply to have the Maya Mobile (a 48-foot mobile classroom) visit your campus! In this in-person program, students will be able to handle objects from LACMA's Art of the Americas collection and learn more about the Ancestral Americas. Visit [lacma.org/education/school-partnership-programs](https://lacma.org/education/school-partnership-programs) to apply.

**THROUGH MAY 2025**

### CREATIVE CLASSROOMS (GRADE 3)

Bring LACMA's Creative Classrooms program to your third graders! This free, in-person program offers four consecutive 90-minute visual arts workshops led by LACMA Teaching Artists, available to all third-grade classes at your school. Learn more and apply at [lacma.org/education/school-partnership-programs](https://lacma.org/education/school-partnership-programs).

Image Credit: Photo © Museum Associates/LACMA, by NightFlare



**THROUGH MAY 2025**

**VIRTUAL LIVE WORKSHOPS (GRADES 6 AND 7)**

Apply for virtual visits to your classroom where students will analyze objects from our collections and discuss Early World Cultures and the Ancestral Americas. This program will take place on Zoom. Visit [lacma.org/education/school-partnership-programs](https://lacma.org/education/school-partnership-programs) to apply.

**LACMA SCHOOL TOURS (GRADES K-12)**

Join our Gallery Educators for in-person guided tours! This spring, we'll focus on the exhibition *We Live in Painting: The Nature of Color in Mesoamerican Art* and a thematic tour of the Modern Art Galleries, *Cultivating Critical Thinking: Highlights of LACMA's Modern Art Collection*. Tours will include grade-appropriate activities and questions to encourage close-looking, conversations, and personal connections. Visit [gallerylearning.lacma.org](https://gallerylearning.lacma.org) for more information.

**LACMA SELF-GUIDED VISITS**

Bring your K-12 students or after-school, camp, or scout groups for a self-guided visit at LACMA! A limited number of groups can be accommodated each day. Self-guided groups can receive free admission for students with advanced reservations. Email [schooltours@lacma.org](mailto:schooltours@lacma.org) at least two weeks in advance to reserve.

**TEACHER PROGRAMS**

There are so many opportunities for teacher professional development this winter! Join us at the museum as well as online for enriching learning experiences.

**WEDNESDAY, JANUARY 22 | 4:30-8 PM | LACMA EVENINGS FOR EDUCATORS: DIGITAL WITNESS**

Join us as we dive into the exhibition *Digital Witness: Revolutions in Design, Photography, and Film*, which looks at the rise of digital image editing technologies in the fields of design, photography, and film from the 1980s to the present. For accommodations requests, please contact [educate@lacma.org](mailto:educate@lacma.org).

**THURSDAY, FEBRUARY 13 | 5-6 PM | ZOOM EDUCATOR SPEAKER SERIES: LAND-CENTERED PRAXIS IN THE ARTS CLASSROOM**

Meet us on Zoom to hear from artist and art educator Flavia Zuñiga-West as she discusses innovative strategies for infusing environmental consciousness into arts education.

**WEDNESDAY, MARCH 19 | 4:30-8 PM | LACMA EVENINGS FOR EDUCATORS: THE NATURE OF COLOR IN MESOAMERICAN ART**

Join us for a special evening as we explore the exhibition *We Live in Painting: The Nature of Color in Mesoamerican Art*, which examines the science, art, and cosmology of color in Mesoamerica. For accommodations requests, please contact [educate@lacma.org](mailto:educate@lacma.org).

**ONLINE COURSES (GRADES K-12)**

Discover two NEW online courses on LACMA's Teachable site! Learn from teachers at LACMA's Visual Arts Magnet Center at Charles White Elementary School about arts integration, comics, and drawing. Sign up for free and browse all online courses at [lacma.teachable.com](https://lacma.teachable.com).

# EXHIBITIONS ON VIEW



## **SIMONE LEIGH**

May 26, 2024–Jan 20, 2025

## **MAGDALENA SUAREZ FRIMKES: THE FINEST DISREGARD**

Aug 18, 2024–Jan 5, 2025

## **WE LIVE IN PAINTING: THE NATURE OF COLOR IN MESOAMERICAN ART**

Sep 15, 2024–Sep 1, 2025

## **MAPPING THE INFINITE: COSMOLOGIES ACROSS CULTURES**

Oct 20, 2024–Mar 2, 2025

## **DIGITAL WITNESS: REVOLUTIONS IN DESIGN, PHOTOGRAPHY, AND FILM**

Nov 24, 2024–Jul 13, 2025

## **IMAGINING BLACK DIASPORAS: 21ST-CENTURY ART AND POETICS**

Dec 15, 2024–Aug 3, 2025

## **MODERN ART**

Ongoing

## **JOSIAH MCELHENY: ISLAND UNIVERSE**

Ongoing

## **METROPOLIS II**

Ongoing

## **RICHARD SERRA: BAND**

Ongoing

## **BARBARA KRUGER: UNTITLED (SHAFTED)**

Ongoing

## **MIRACLE MILE**

Ongoing

## **MARK BRADFORD: 150 PORTRAIT TONE**

Ongoing

## **AI WEIWEI: CIRCLE OF ANIMALS/ZODIAC HEADS**

Ongoing

## **NEW ACQUISITIONS TO THE RIFKIND CENTER**

Ongoing



## NEAR AND FAR

### **NATURE ON NOTICE: CONTEMPORARY ART AND ECOLOGY**

Dec 21, 2024–Aug 2, 2025

Charles White Elementary School

### **BEFORE YOU NOW: CAPTURING THE SELF IN PORTRAITURE**

Jan 25–Apr 13, 2025

Lancaster Museum of Art and History

The Boone Children's Gallery is made possible in part by the MaryLou and George Boone Children's Gallery Endowment Fund.

Andell Family Sundays is supported by Andrew and Ellen Hauptman and The Hauptman Family Foundation. Outreach for Andell Family Sundays is made possible in part by Tally and Bill Mingst.

NexGenLA is supported by The Eisner Foundation.

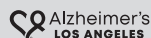
Adult Art Classes are supported in part by the Dorothy Schick Endowment Fund.

Create+Collaborate is supported by E.A. Michelson Philanthropy.



Personal Connections is made possible by Emily Greenspan and Bruce Newman.

Presented in partnership with



Generous support for Community Programs is provided by the Anna H. Bing Children's Art Endowment Fund. Additional support is provided by Kim and Keith Allen-Niesen, the Louis and Harold Price Foundation, the Edward A. and Ai O. Shay Family Foundation, and the Dwight Stuart Youth Fund.

Ancient World Mobile: Early World Cultures and Maya Mobile: Art of the Ancestral Americas programs are made possible by a generous grant from the Max H. Gluck Foundation.

Educator-Led Gallery Tours Sponsored by East West Bank Foundation.



Generous support for School and Teacher Programs is provided by the Anna H. Bing Children's Art Endowment Fund. Additional funding is provided by the Mara W. Breech Foundation, the Ducommun and Gross Family Foundation, Edison International, Thomas and Dorothy Leavey Foundation, The Kenneth T. and Eileen L. Norris Foundation, the Louis and Harold Price Foundation, the Anthony & Jeanne Pritzker Family Foundation, the Michael & Irene Ross Endowment Fund of the Jewish Community Foundation of Los Angeles, the Edward A. and Ai O. Shay Family Foundation, The Lucille Ellis Simon Foundation, Dwight Stuart Youth Fund, and Superior Grocers.

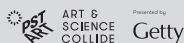


All education and outreach programs at LACMA are underwritten by the LACMA Education Fund and are supported in part by the Judy and Bernard Briskin Family Foundation, The Rosalinde and Arthur Gilbert Foundation, the William Randolph Hearst Endowment Fund for Arts Education, Alfred E. Mann Charities, The Ralph M. Parsons Foundation, Gloria Ricci Lothrop, the Flora L. Thornton Foundation, U.S. Bank, and The Yabuki Family Foundation.

*The Guide* Production Team

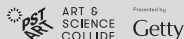
Naima J. Keith, VP of Education and Public Programs  
Jacqueline Piña Ascencio, Data Specialist  
Julia Luke (julialuke.com), Graphic Design

*Nature on Notice: Contemporary Art and Ecology* was organized by the Los Angeles County Museum of Art.



Exhibitions and education programs at the Charles White Elementary School Gallery are made possible through the Anna H. Bing Children's Art Endowment Fund.

*We Live in Painting: The Nature of Color in Mesoamerican Art* was organized by the Los Angeles County Museum of Art.



This exhibition has been made possible in part by the National Endowment for the Humanities: Democracy demands wisdom.



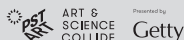
Support for LACMA's Art of the Ancient Americas department is provided by Daniel Greenberg, Susan Steinhauser and The Greenberg Foundation, Mellon Foundation, and Gregory Annenberg Weingarten, GRoW @ Annenberg.

Any views, findings, conclusions, or recommendations expressed in this exhibition do not necessarily represent those of the National Endowment for the Humanities.

Major loans courtesy of Instituto Nacional de Antropología e Historia, Mexico.

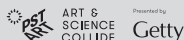


*Mapping the Infinite: Cosmologies Across Cultures* was organized by the Los Angeles County Museum of Art.



Generous support provided by an anonymous donor.

*Digital Witness: Revolutions in Design, Photography, and Film* was organized by the Los Angeles County Museum of Art.



Premier sponsorship provided by Adobe.

## Adobe

Generous support provided by the Carl & Marilyn Thoma Foundation, Contemporary Projects Endowment Fund and LACMA's Digital Leaders.



The latest edition of Southern California's landmark arts event, PST ART, presents more than 70 exhibitions from organizations across the region exploring the intersections of art and science, both past and present. PST ART is presented by Getty. For more information about PST ART: *Art & Science Collide*, please visit [pst.art](http://pst.art)

*Before You Now: Capturing the Self in Portraiture* was organized by the Los Angeles County Museum of Art in collaboration with the Riverside Art Museum; California State University, Northridge, Art Galleries; Lancaster Museum of Art and History; and Vincent Price Art Museum at East Los Angeles College.

## Local Access

Local Access is a series of American art exhibitions created through a multi-year, multi-institutional partnership formed by LACMA as part of the Art Bridges Cohort Program.

Art Bridges + LACMA

*Imagining Black Diasporas: 21st Century Art and Poetics* was organized by the Los Angeles County Museum of Art.

Major support provided by LACMA's Future Arts Collective and the Terra Foundation for American Art.

## TERRA

Generous support provided by Burton Aaron, Taylor and Wemimo Abbey, Art Bridges, Janine Sherman Barrois and Lyndon J. Barrois, Sr., Anita Bhatia, Lizzie and Steve Blatt, Contemporary Projects Endowment Fund, Fabian Newton Family, Rebekah and Desmond Howard, Deon T. Jones and Cameron J. Ross, Erika M. Lewis, Kayma Liburd, Sarah Meade, the National Endowment for the Arts, Nicole Nicholas, Outset Contemporary Art Fund, Jason Riffe, Stephanie and Leon Vahn, Tiffany Lea Williams, Byron M. A. Young MD, and Paulina Zamora Menéndez.



Research support by A4 Arts Foundation.

*Josiah McElheny: Island Universe* was organized by the Los Angeles County Museum of Art.

*Simone Leigh* is organized by the Institute of Contemporary Art/Boston.

This project is supported in part by the Henry Luce Foundation, the National Endowment for the Arts, and the Terra Foundation for American Art.



Major support provided by Allison and Larry Berg, Matthew Marks Gallery, D'Rita and Robbie Robinson, Andy Song, and Visionary Women.

Generous support provided by Taylor and Wemimo Abbey, Anita Blanchard MD and Martin Nesbitt, Contemporary Projects Endowment Fund, Eric and Terri Holoman, Gail and George Knox, Andrea Nelson Meigs and John Meigs Jr., Pasadena Art Alliance, V. Joy Simmons MD, Ric Whitney and Tina Perry-Whitney, and Dr. Francille Rusan Wilson and Dr. Ernest J. Wilson III.

*Magdalena Suarez Frimkess: The Finest Disregard* was organized by the Los Angeles County Museum of Art.

Generous support provided by Michael Asher Foundation, Contemporary Projects Endowment Fund, Claire Falkenstein Foundation, kaufmann repetto, Pasadena Art Alliance, LJ Shirvanian Foundation, Graham Steele and Ulysses de Santi, and an anonymous donor. Additional support provided by Charlie Pohlad.

All exhibitions at LACMA are underwritten by the LACMA Exhibition Fund. Major annual support is provided by The David & Meredith Kaplan Foundation, with generous annual funding from Louise and Brad Edgerton, Edgerton Foundation, Tanya Fileva, Mary and Daniel James, Bert Levy Fund, Justin Lubliner, Alfred E. Mann Charities, Kelsey Lee Offield, Maggie Tang, Lenore and Richard Wayne, and Marietta Wu and Thomas Yamamoto.

# SUPPORT LACMA TODAY! MEMBERSHIP



Becoming a LACMA member is now easier than ever! Starting at \$7 a month for an Individual-level membership, you can enjoy a long list of ongoing exclusive perks, including unlimited free admission, invitations to previews, parties, film screenings, and other programs just for members, discounts on shopping and dining, and so much more!

Join today:



Image Credit: Photo © Museum Associates/LACMA



# TELL US WHAT YOU THINK!